

GENERAL NOTES TUF-1

NOTE: THIS PLAN CANNOT BE USED BY ITSELF FOR PLACEMENT OF COMMERCIAL MODULAR BUILDINGS IN FLOOD HAZARD AREAS. A SEPARATE PLAN ADDRESSING FLOTATION STABILIZATION IS REQUIRED

1. **DESIGN LOADS:** CODE **2019 CBC**
 ROOF LIVE LOAD ---20 PSF
 FLOOR LIVE LOAD - 50 PSF
 WIND LOAD - 110 MPH EXPOSURE "C" & 130 MPH EX. "C"
 SEISMIC ZONE - $S_s=1.5$ $F_o=1.4$ $S_{ds}=1.41$ SITE CLASS "D"

*FOR DESIGN LOADS OTHER THAN THOSE SHOWN HERE ON, CONTACT ABESCO OR PACIFIC CONSULTING ENGINEERS

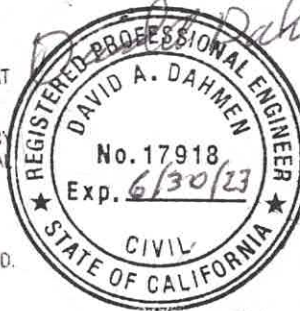
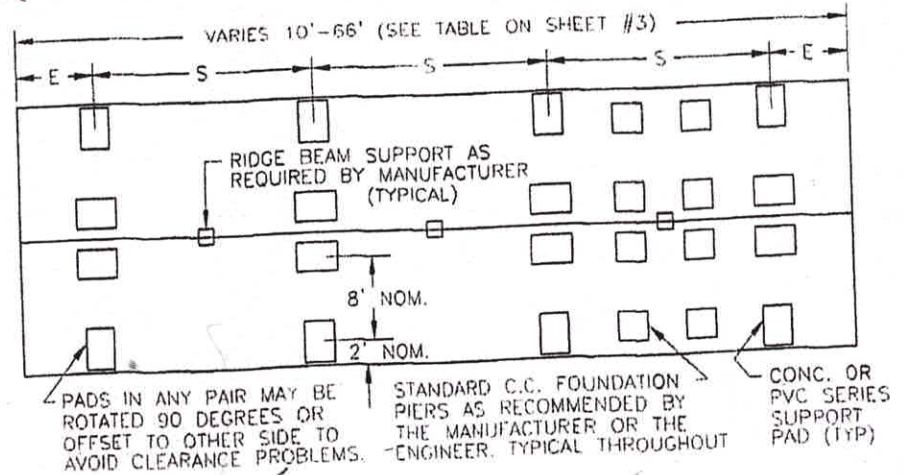
2. THIS FOUNDATION SYSTEM IS DESIGNED TO BE CONSTRUCTED ON A FAIRLY LEVEL SITE WITH NO EXISTING SOIL PROBLEMS.
 3. CHASSIS BEAM SUPPORTS SHALL BE LOCATED AND SIZED FOR THE LOADS AS SHOWN IN THE "COMMERCIAL COACH INSTALLATION INSTRUCTIONS".
 4. IN AREAS WHERE DIFFERENTIAL SETTLEMENT (D.S.) CAN OCCUR, COMMERCIAL COACH SHALL BE READJUSTED WHEN DS EXCEEDS 1/4", OR WHEN IT WILL ADVERSELY AFFECT COMMERCIAL COACH UNIT.
 5. FOOTINGS ARE DESIGNED FOR 1500 PSF TOTAL LOAD SOIL PRESSURE, AND SHALL BE COMPATIBLE WITH LOCAL SOIL CONDITIONS. COMPACTED SAND MAY BE USED TO FILL LOCAL VOIDS UNDER PADS.
 6. STRUCTURAL STEEL: FABRICATED ACCORDING TO AISC SPECIFICATION. WELD ACCORDING TO AWS SPECIFICATIONS. ELECTRODES-370 PLATES-ASTM A36 BOLTS-5AE GR 5=ASTM A449=ASTM A3725.
 7. THE **ABESCO** 1 ASSEMBLIES SHOWN ON THIS PAGE SHALL BE LISTED AND LABELED BY BSK AND ASSOCIATES FOR THE FOLLOWING LOADS.

ALLOWABLE LOADS:	HORIZONTAL	VERTICAL
TUF-1	2200#	6000#
E-Z TIE PAD	2200#	6000#

8. DURING PRELIMINARY INSPECTION, THE ESTIMATOR SHALL ENSURE THAT THE COMMERCIAL COACH CHASSIS BEAMS ARE OF STANDARD SECTION.
 9. EXISTING COACHES MAY BE RETROFITTED TO RESIST SEISMIC FORCES BY INSTALLING **ABESCO** TUF-1 UNITS AS SHOWN ON THIS PAGE OF TYPICAL FOUNDATION PLANS.
 10. SINGLE-WIDE UNITS REQUIRE ADDITIONAL RESTRAINT. (SEE SHEET #3)
 11. ALL METAL COMPONENTS AND ATTACHMENTS ITEMS SHALL BE PROTECTIVE COATED.
 12. WHEN CONCRETE SLAB IS IN EXISTANCE, PAD IS NOT REQUIRED. ANCHOR STAND TO CONCRETE SLAB WITH FOUR (4) 1/2"x 3 1/2" EXPANSION ANCHORS.
 13. FOUNDATION BLOCKS 16"x 32"x12" POURED IN PLACE AT GROUND LEVEL MAY BE USED AT INSTALLER'S DISCRETION ALTERNATIVE TO PADS. CARRY ALL FOOTINGS DOWN TO FIRM, UNDISTURBED SOILS.

SINGLE WIDE COACHES
 E= 2' MIN. / 8' MAX.
 S= 6' MIN. / 16' MAX.

DOUBLE/MULTIPLE COACHES
 E= 2' MIN. / 11' MAX.
 S= 6' MIN. / 22' MAX.



5-12-21

**TUF - 1
 COMMERCIAL MODULAR
 FOUNDATION SYSTEM**

ABESCO
 5851 FLORIN-PERKINS ROAD
 SACRAMENTO, CA 95828
 PH: (800) 382-8831
 FAX: (916) 383-5207
 ABESCO1@LIVE.COM

NOTE:

THE FOUNDATION SYSTEM IS DESIGNED FOR THE TUF-1 STANCHIONS TO BE PLACED ON THE OUTSIDE CHASSIS BEAMS OF THE MULTI-WIDE HOMES. THE TOTAL NUMBER OF TUF-1 STANCHIONS REQUIRED, CAN BE PLACED ON THE OUTSIDE OF THE INNER CHASSIS BEAMS AT EACH MODULE, SO LONG AS THE MAXIMUM SPACINGS SHOWN THIS SHEET ARE NOT EXCEEDED

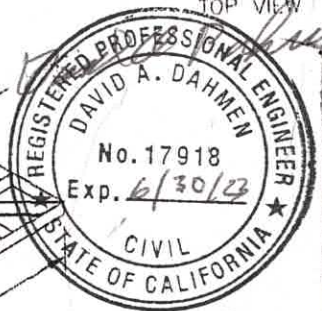
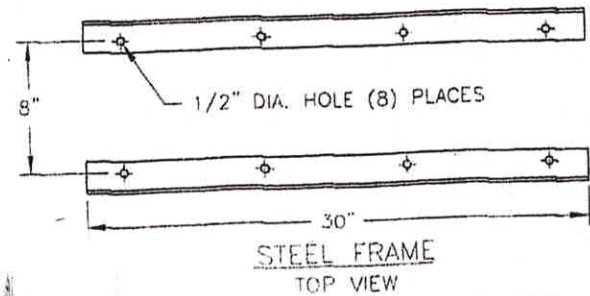
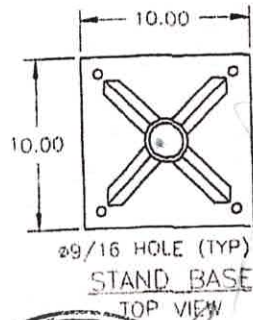
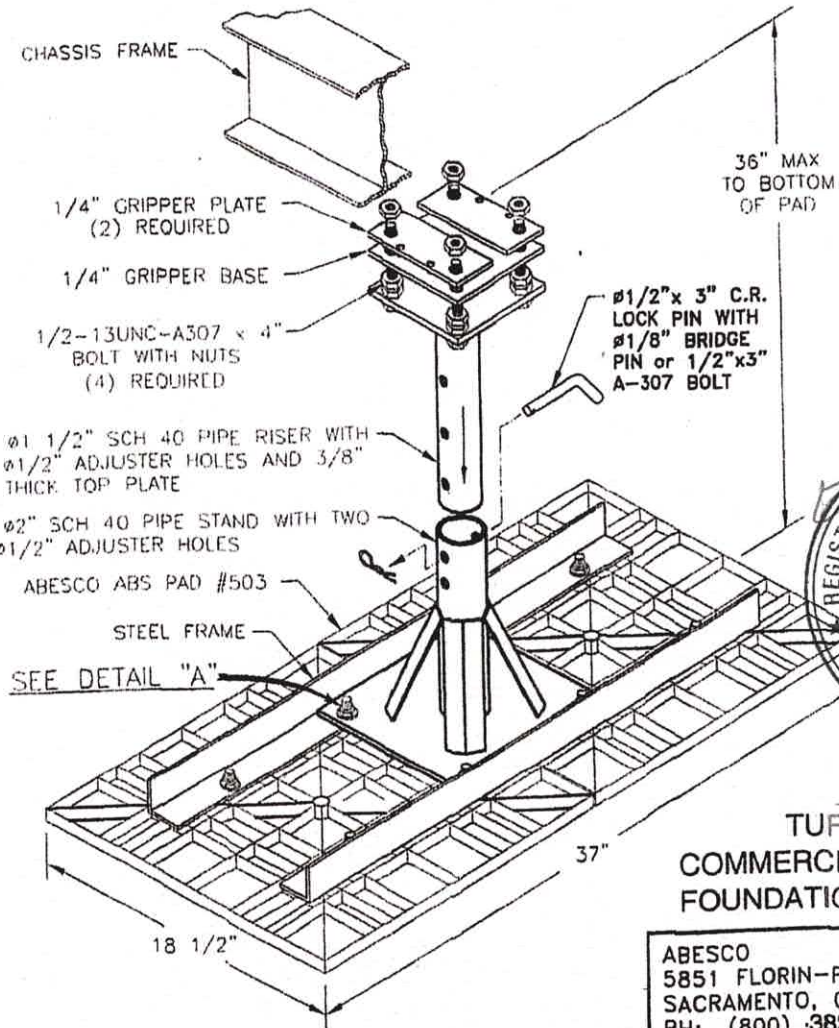
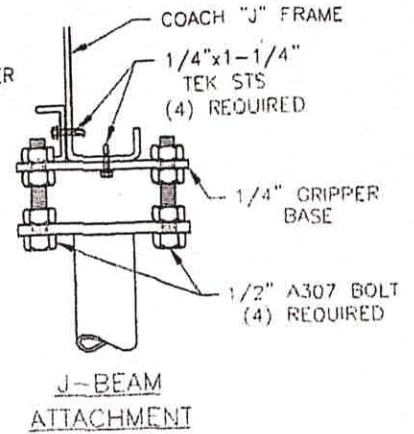
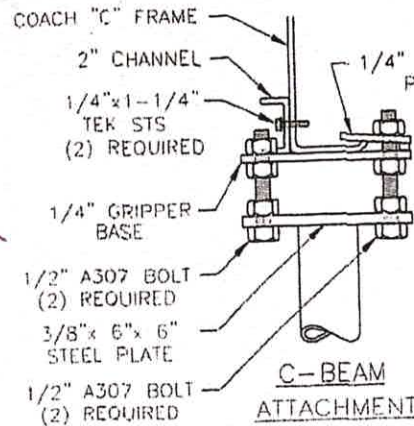
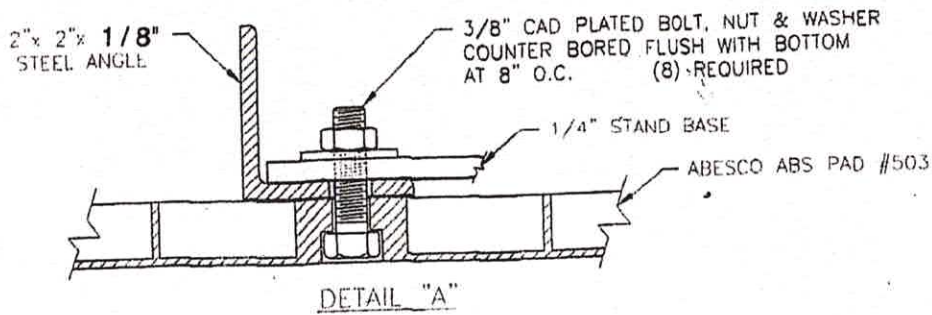
STATE APPROVAL

COMMERCIAL MODULAR COMMERCIAL COACH
 FOUNDATION SYSTEM
 HEALTH AND SAFETY CODE, SECTION 18551
 APPROVED

APPROVAL DOES NOT AUTHORIZE OR APPROVE ANY OMISSIONS OR DEVIATION FROM REQUIREMENTS OF APPLICABLE STATE LAWS AND REGULATIONS

STATE OF CALIFORNIA
 DEPARTMENT OF HOUSING AND COMMUNITY DEVELOPMENT
 DIVISION OF CODES AND STANDARDS

BY *[Signature]* DATE 5/19/21
 SPA NO. 40-10E THIS PLAN APPROVAL EXPIRES 6/10/23



TUF - 1
COMMERCIAL MODULAR
FOUNDATION SYSTEM

ABESCO
5851 FLORIN-PERKINS ROAD
SACRAMENTO, CA 95828
PH: (800) 382-8831
FAX: (916) 383-5207

ABESCO1@LIVE.COM

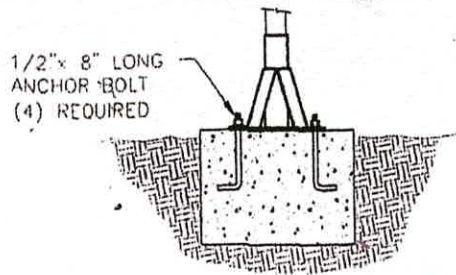
STATE APPROVAL

HEALTH AND SAFETY CODE, SECTION 18551
APPROVED

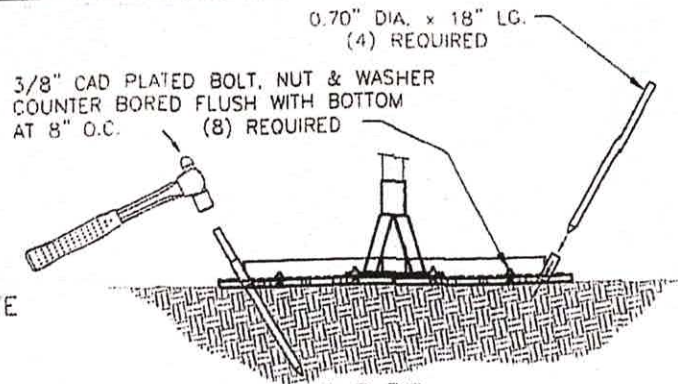
APPROVAL DOES NOT AUTHORIZE OR APPROVE ANY OMISSIONS OR DEVIATION FROM REQUIREMENTS OF APPLICABLE STATE LAWS AND REGULATIONS

STATE OF CALIFORNIA
DEPARTMENT OF HOUSING AND COMMUNITY DEVELOPMENT
DIVISION OF CODES AND STANDARDS

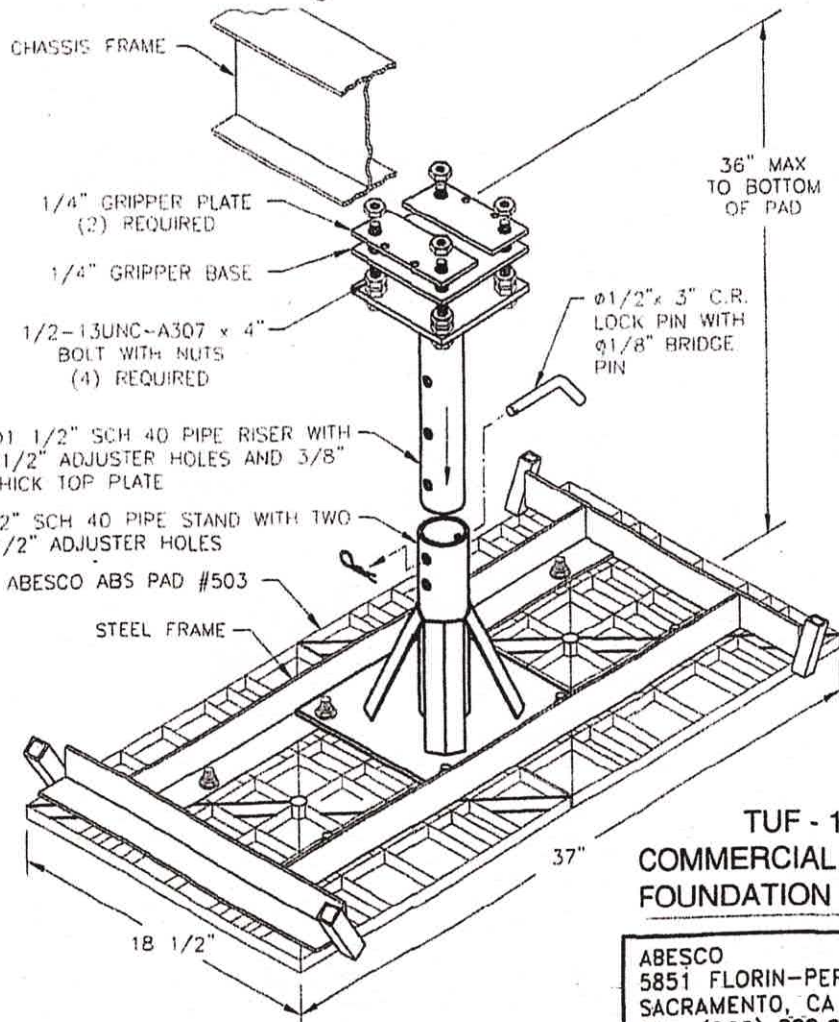
BY: *[Signature]* DATE: 5/19/21
SPA NO: 40-10P THIS PLAN APPROVAL EXPIRES: 6/10/23



POURED IN PLACE 16x32x12 CONCRETE FOUNDATION INSTALLATION



E-Z TIE PLASTIC PAD INSTALLATION



CHASSIS FRAME

1/4" GRIPPER PLATE (2) REQUIRED

1/4" GRIPPER BASE

1/2-13UNC-A307 x 4" BOLT WITH NUTS (4) REQUIRED

36" MAX TO BOTTOM OF PAD

ø1/2" x 3" C.R. LOCK PIN WITH ø1/8" BRIDGE PIN

ø1 1/2" SCH 40 PIPE RISER WITH ø1/2" ADJUSTER HOLES AND 3/8" THICK TOP PLATE

ø2" SCH 40 PIPE STAND WITH TWO ø1/2" ADJUSTER HOLES

ABESCO ABS PAD #503

STEEL FRAME

37"

18 1/2"

TUF - 1
COMMERCIAL MODULAR FOUNDATION SYSTEM

ABESCO
5851 FLORIN-PERKINS ROAD
SACRAMENTO, CA 95828
PH: (800) 382-8831
FAX: (916) 383-5207
ABESCO1@LIVE.COM

MULTI-WIDE UNITS

LENGTH OF COACH	WIDTH OF COACH		
	To 28'	36'	48'
24'-0"	4	4	4
36'-0"	4	4	6
40'-0"	6	6	6
44'-0"	6	6	6
50'-0"	6	6	6
56'-0"	8	8	8
60'-0"	8	8	10
66'-0"	8	8	10

NUMBER OF TUF-1 REQUIRED

SINGLE WIDE UNITS

LENGTH OF COACH	WIDTH OF COACH				NO. OF E-Z TIE PADS REQ'D
	8'	10'	12'	14'	
24'-0"	4	4	4	4	4 - 2 EA. BM.
28'-0"	4	4	4	4	4 - 2 EA. BM.
36'-0"	4	4	4	4	6 - 3 EA. BM.
40'-0"	6	6	6	6	6 - 3 EA. BM.
44'-0"	6	6	6	6	6 - 3 EA. BM.
50'-0"	6	6	6	6	6 - 3 EA. BM.
56'-0"	8	8	8	8	8 - 4 EA. BM.
60'-0"	8	8	8	8	8 - 4 EA. BM.
66'-0"	10	10	10	10	10 - 5 EA. BM.

NUMBER OF TUF-1 REQUIRED

NOTE: SINGLE WIDE UNITS REQUIRE (4) E-Z TIE PADS. TUF-1 PIERS ARE TO BE PLACED AT APPROXIMATELY EQUAL INTERVALS ALONG EACH FRAME RAIL.

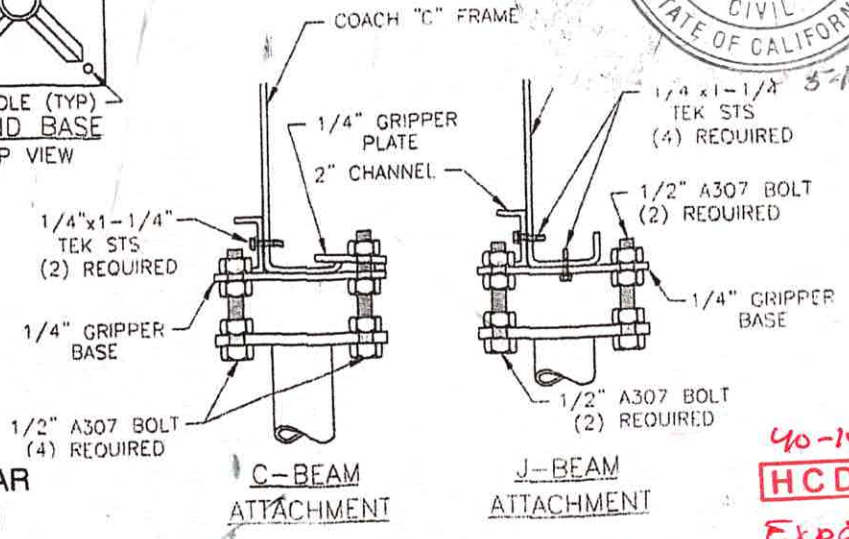
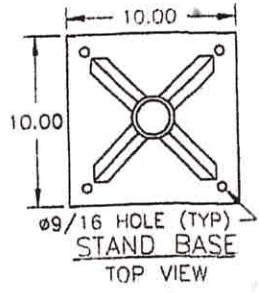
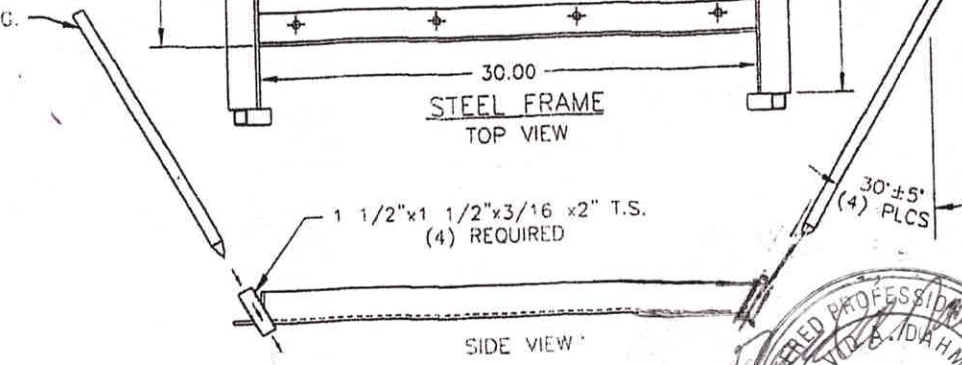
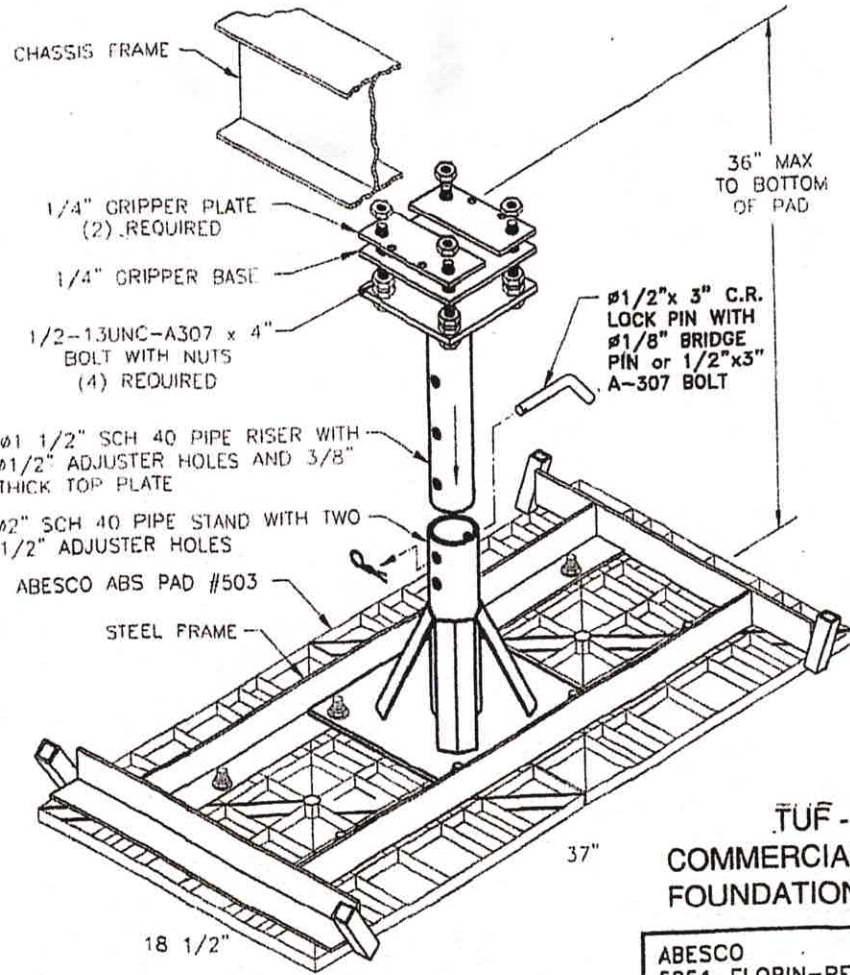
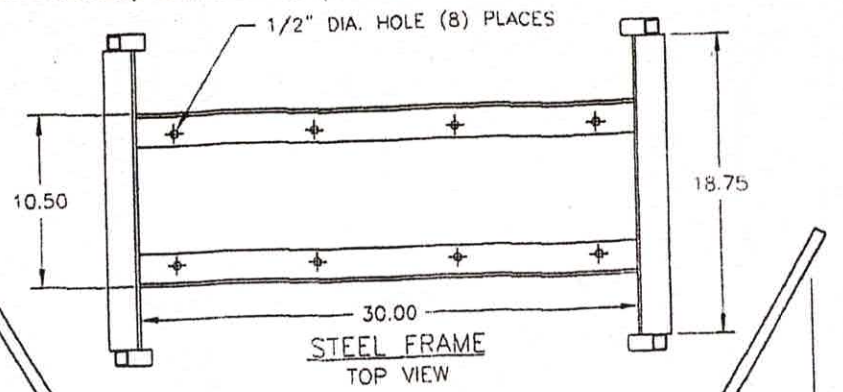
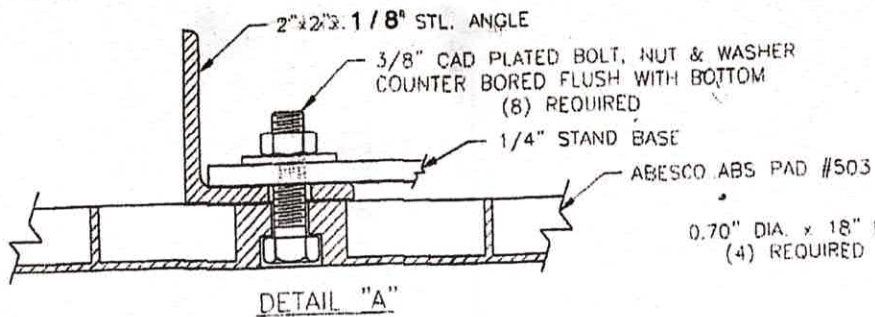
STATE APPROVAL

COMMERCIAL/MODULAR/COMMERCIAL COACH FOUNDATION SYSTEM
HEALTH AND SAFETY CODE, SECTION 18551
APPROVED

APPROVAL DOES NOT AUTHORIZE OR APPROVE ANY OMISSIONS OR DEVIATION FROM REQUIREMENTS OF APPLICABLE STATE LAWS AND REGULATIONS

STATE OF CALIFORNIA
DEPARTMENT OF HOUSING AND COMMUNITY DEVELOPMENT
DIVISION OF CODES AND STANDARDS

BY *[Signature]* DATE 5/19/21
SPA NO. 40-105
THIS PLAN APPROVAL EXPIRES 6/10/23



TUF-1
 COMMERCIAL MODULAR
 FOUNDATION SYSTEM

E-Z TIE DOWN SYSTEM

ABESCO
 5851 FLORIN-PERKINS ROAD
 SACRAMENTO, CA 95828
 PH: (800) 382-8831
 FAX: (916) 383-5207
 ABESCO1@LIVE.COM

40-10F
 HCD
 Exp 6/10/23